

# Suicide Indicator Report

Volusia, Flagler, Putnam &  
St. Johns County, Florida

January 2021

SMA Healthcare  
Zero Suicide Program



# Suicide Death Counts, 2016-2020 (2020 PROVISIONAL Data)

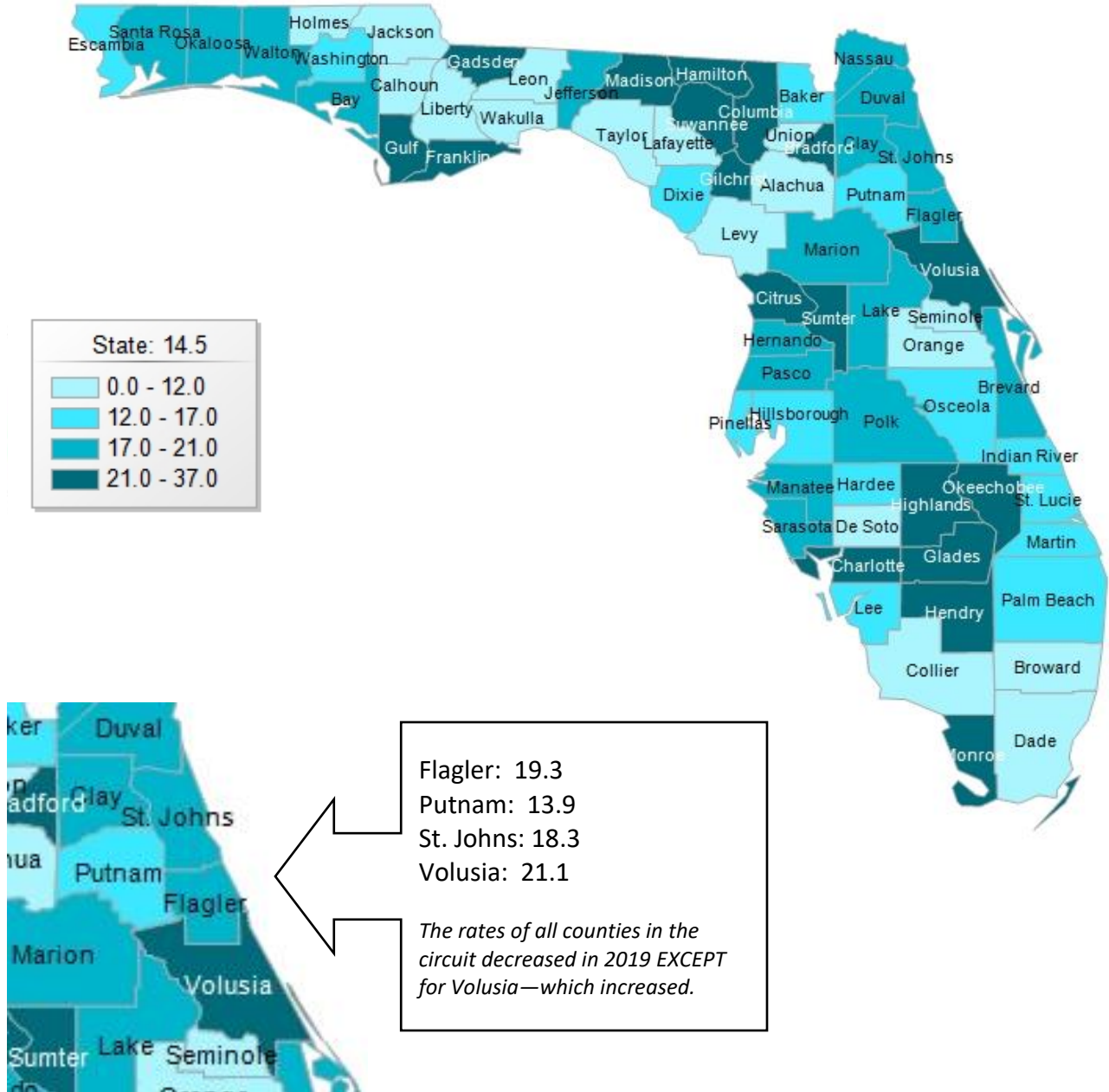
Source: Florida Health CHARTS, Death Count Query

<b>2016-2020 Suicide Death Counts</b>					
<b>2020 data is PROVISIONAL</b>					
(Suicide By Firearms Discharge (X72-X74), Suicide By Other & Unspecified Means & Sequelae (X60-X71, X75-X84, Y87.0,U03))					
	<b>2020</b>	<b>2019</b>	<b>2018</b>	<b>2017</b>	<b>2016</b>
<b>Flagler</b>	<b>24</b>	25	29	31	20
<b>Putnam</b>	<b>21</b>	12	24	18	15
<b>St. Johns</b>	<b>43</b>	53	56	48	43
<b>Volusia</b>	<b>117</b>	128	125	123	103

# Suicide Death Rate, Florida and Region

Source: Florida Health CHARTS

## 2019 Suicide Age-adjusted Death Rate, Per 100,000



# Suicide Death Rates, Florida

Source: Florida Health CHARTS

## 2019 Suicide Age-Adjusted Death Rate, Single Year Per 100,000

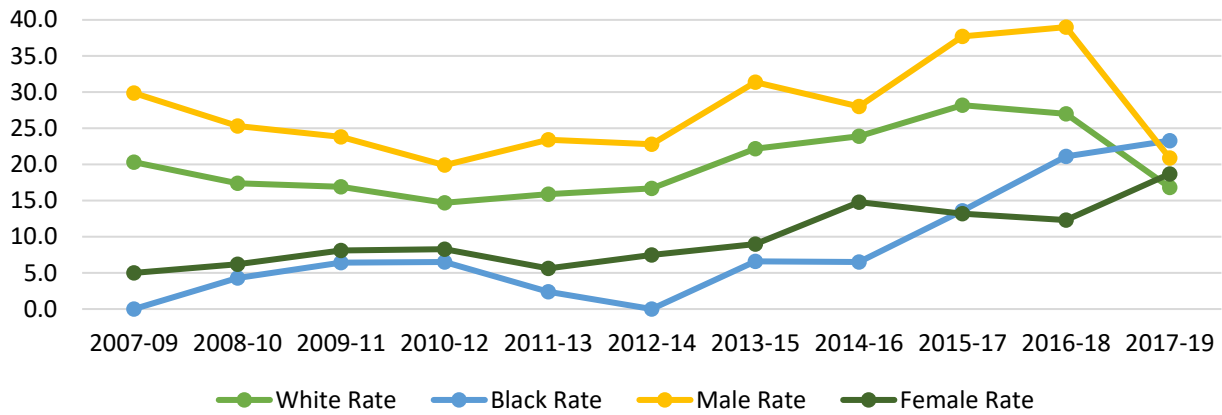
Rank	County	Count	Rate
1	Gulf	7	36.8
2	Glades	4	34.4
3	Madison	6	31.8
4	Franklin	3	29.8
5	Columbia	20	28.6
6	Gadsden	12	27.4
7	Citrus	46	26.2
8	Hamilton	3	26.2
9	Sumter	35	25.4
10	Monroe	22	24.5
11	Charlotte	50	24.0
12	Suwannee	12	23.6
13	Highlands	27	23.3
14	Gilchrist	4	23.1
15	Bradford	6	22.4
16	Okeechobee	8	21.9
17	Hendry	9	21.1
18	Volusia	128	21.1
19	Pasco	119	20.8
20	Lake	78	20.0
21	Nassau	17	20.0
22	Hernando	43	19.9
23	Brevard	137	19.5
24	Flagler	25	19.3
25	Sarasota	86	19.1
26	Marion	79	19.0
27	Santa Rosa	35	18.8
28	Okaloosa	37	18.3
29	St. Johns	53	18.3
30	Jefferson	4	18.2
31	Clay	43	18.1
32	Walton	14	18.0
33	Bay	35	17.9
34	Duval	177	17.4
35	Polk	129	17.3

Rank	County	Count	Rate
36	Manatee	76	17.2
37	Pinellas	189	16.6
38	Indian River	29	16.5
39	Baker	5	16.1
40	Washington	4	16.1
41	Martin	32	16.0
42	Escambia	53	15.6
43	Dixie	4	15.4
44	Lee	124	14.8
45	Florida	3,427	14.5
46	Hardee	4	14.1
47	Hillsborough	216	14.1
48	Palm Beach	229	13.9
49	Putnam	12	13.9
50	Osceola	52	13.8
51	St. Lucie	47	13.4
52	Alachua	31	11.9
53	Collier	45	11.9
54	Broward	241	11.2
55	De Soto	5	11.1
56	Leon	33	11.1
57	Liberty	1	10.4
58	Seminole	53	10.4
59	Orange	140	9.6
60	Wakulla	4	9.6
61	Jackson	5	9.2
62	Taylor	2	9.0
63	Miami-Dade	268	8.6
64	Holmes	2	8.6
65	Levy	3	6.7
66	Union	1	6.1
67	Calhoun	1	5.1
68	Lafayette	0	0.0

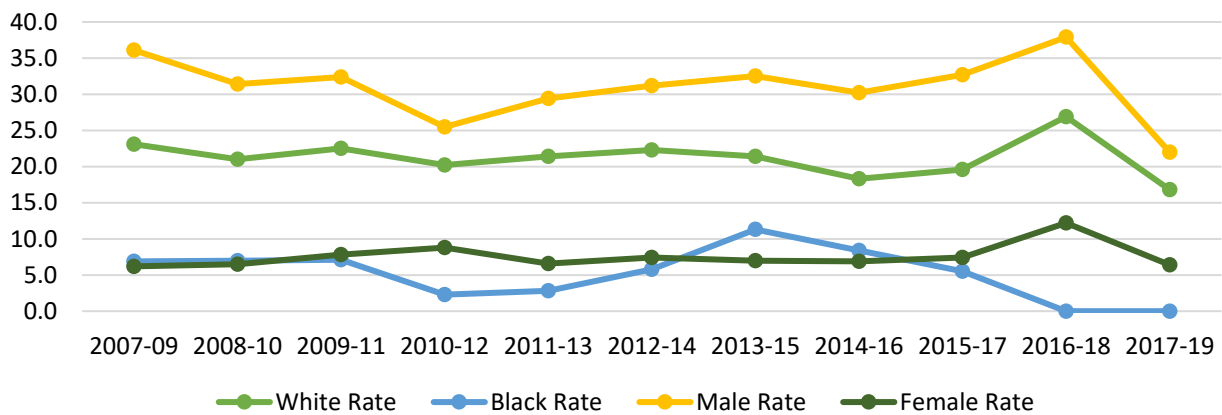
# Suicide Death Trends, by Race and Gender

Source: Florida Health CHARTS

## Flagler Suicide Age-Adjusted Death Rate, 3-Year Rolling Rates



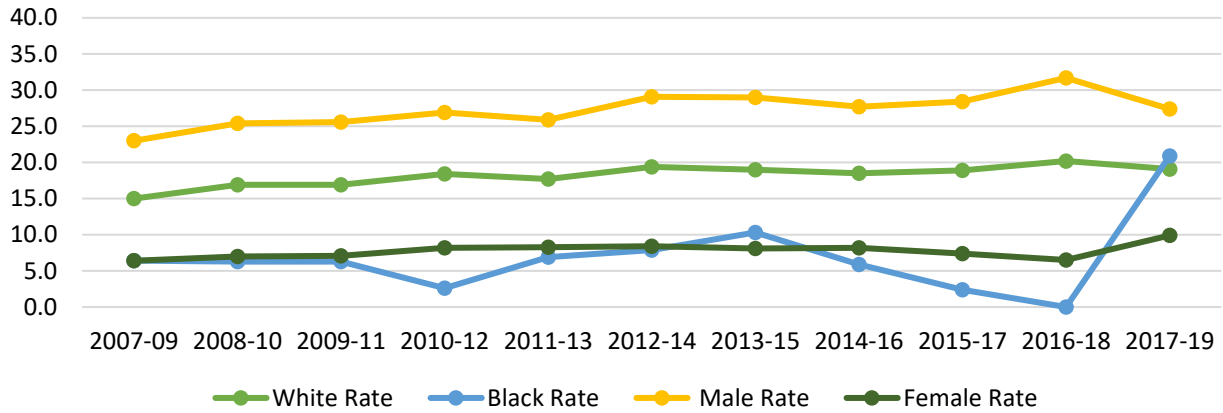
## Putnam Suicide Age-Adjusted Death Rate, 3-Year Rolling Rates



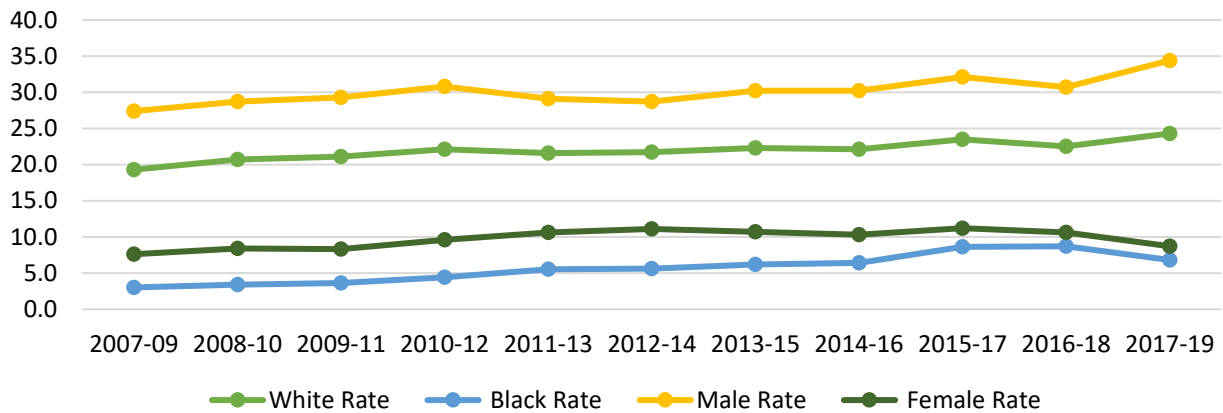
# Suicide Death Trends, By Race and Gender, continued

Source: Florida Health CHARTS

## St. Johns Suicide Age-Adjusted Death Rate, 3-Year Rolling Rates



## Volusia Suicide Age-Adjusted Death Rate, 3-Year Rolling Rates



# Suicide Death Trends, By Age Groups

Source: Florida Health CHARTS

## Suicide Deaths, Single Year Counts by Age Groups

<b>Flagler County</b>	<b>Under Age 18</b>	<b>Age 18-24</b>	<b>Age 25-60</b>	<b>Age 61 &amp; Older</b>	<b>Total (All Ages)</b>
	Count	Count	Count	Count	Count
2019	1	1	12	11	25
2018	0	1	17	11	29
2017	1	1	20	9	31
2016	0	2	16	2	20
2015	0	6	9	11	26
2014	0	1	12	7	20
<b>Putnam County</b>	<b>Under Age 18</b>	<b>Age 18-24</b>	<b>Age 25-60</b>	<b>Age 61 &amp; Older</b>	<b>Total (All Ages)</b>
	Count	Count	Count	Count	Count
2019	0	0	6	6	12
2018	0	1	13	10	24
2017	1	2	7	8	18
2016	1	0	8	6	15
2015	1	1	6	4	12
2014	0	2	8	4	14
<b>St. Johns County</b>	<b>Under Age 18</b>	<b>Age 18-24</b>	<b>Age 25-60</b>	<b>Age 61 &amp; Older</b>	<b>Total (All Ages)</b>
	Count	Count	Count	Count	Count
2019	1	3	34	15	53
2018	3	5	26	22	56
2017	1	2	28	17	48
2016	1	2	19	21	43
2015	2	4	24	10	40
2014	1	3	21	16	41
<b>Volusia County</b>	<b>Under Age 18</b>	<b>Age 18-24</b>	<b>Age 25-60</b>	<b>Age 61 &amp; Older</b>	<b>Total (All Ages)</b>
	Count	Count	Count	Count	Count
2019	2	9	68	49	128
2018	2	6	69	48	125
2017	1	6	84	32	123
2016	0	7	56	40	103
2015	2	9	81	32	124
2014	5	9	57	35	106



# Involuntary Examination “Baker Act” Data, Florida

Source: The Baker Act Fiscal Year 2017/2018 Annual Report, Baker Act Reporting Center

The Florida Mental Health Act (F.S. 394, Part I), commonly known as the Baker Act, governs mental health treatment, including involuntary examination and involuntary placement.

## Flagler County Involuntary Examinations

Fiscal Year	All Ages		Children (<18)		Older Adults (65+)	
	Number of Exams	Rate Per 100,000	Number of Exams	Rate Per 100,000	Number of Exams	Rate Per 100,000
2018-2019	787	725	214	1475	69	211
2017-2018	716	681	185	1266	87	301
2016-2017	561	544	126	873	63	226
2015-2016	552	545	133	933.40	44	162
2014-2015	497	501	148	1034.17	45	176
2013-2014	434	444	128	895.23	51	207
2012-2013	514	529	139	975.16	43	177
2011-2012	536	557	119	832.40	49	207
2010-2011	563	588	159	1114.23	39	167
2009-2010	543	572	129	1003.03	53	200

## Putnam County Involuntary Examinations

Fiscal Year	All Ages		Children (<18)		Older Adults (65+)	
	Number of Exams	Rate Per 100,000	Number of Exams	Rate Per 100,000	Number of Exams	Rate Per 100,000
2018-2019	550	749	113	982	37	224
2017-2018	641	876	147	1288	38	241
2016-2017	561	769	128	1123	33	214
2015-2016	517	711	126	1102	32	213
2014-2015	545	751	133	1168	23	156
2013-2014	430	592	92	797	26	182
2012-2013	423	578	72	615	38	267
2011-2012	404	546	72	602	28	197
2010-2011	492	662	84	694	29	206
2009-2010	453	607	55	437	24	165

## Involuntary Examination “Baker Act” Data, Florida, continued

### St. Johns County Involuntary Examinations

Fiscal Year	All Ages		Children (<18)		Older Adults (65+)	
	Number of Exams	Rate Per 100,000	Number of Exams	Rate Per 100,000	Number of Exams	Rate Per 100,000
2018-2019	1,113	461	210	522	75	157
2017-2018	995	433	161	422	91	211
2016-2017	906	411	171	464	48	118
2015-2016	865	405	189	523	47	123
2014-2015	854	412	184	525	52	144
2013-2014	875	434	195	564	45	133
2012-2013	901	460	173	509	52	161
2011-2012	990	513	145	428	74	238
2010-2011	982	517	179	530	66	222
2009-2010	932	508	148	503	63	215

### Volusia County Involuntary Examinations

Fiscal Year	All Ages		Children (<18)		Older Adults (65+)	
	Number of Exams	Rate Per 100,000	Number of Exams	Rate Per 100,000	Number of Exams	Rate Per 100,000
2018-2019	4,700	882	1,192	1708	357	278
2017-2018	4,544	868	1,025	1468	447	362
2016-2017	4,164	805	890	1287	315	263
2015-2016	3,812	747	900	1319	252	217
2014-2015	3,795	753	850	1247	348	306
2013-2014	3,695	741	805	1181	342	313
2012-2013	4,145	834	733	1071	389	361
2011-2012	4,317	871	770	1118	405	382
2010-2011	4,550	920	808	1172	371	356
2009-2010	4,107	810	746	1029	283	259

# Intentional Injury Data

Source: Florida Injury Surveillance System

## Non-Fatal Injury Emergency Department Visits, Intentional Injury/Self-Harm

	Flagler		Putnam		St. Johns		Volusia	
	#	Age Adjusted Rate	#	Age Adjusted Rate	#	Age Adjusted Rate	#	Age Adjusted Rate
2019	76	93.54	56	96.43	93	44.88	299	66.69
2018	67	80.04	58	99.66	68	33.44	297	67.45
2017	64	80.12	55	87.50	70	34.75	298	68.58
2016	48	63.63	69	111.59	60	31.29	325	72.76
2015	58	72.51	72	118.91	68	35.57	334	75.28
2014	56	72.00	33	54.11	74	40.55	327	74.30

## Non-Fatal Injury Hospitalizations, Intentional Injury/Self-Harm

	Flagler		Putnam		St. Johns		Volusia	
	#	Age Adjusted Rate	#	Age Adjusted Rate	#	Age Adjusted Rate	#	Age Adjusted Rate
2019	26	24.49	26	43.11	107	43.80	209	40.11
2018	42	44.41	35	51.02	124	55.28	223	44.16
2017	40	44.54	32	44.69	113	51.84	223	44.07
2016	37	42.66	21	33.56	128	62.32	229	47.20
2015	34	37.86	26	40.84	123	57.73	238	48.65
2014	51	60.68	39	54.03	108	53.93	242	50.44